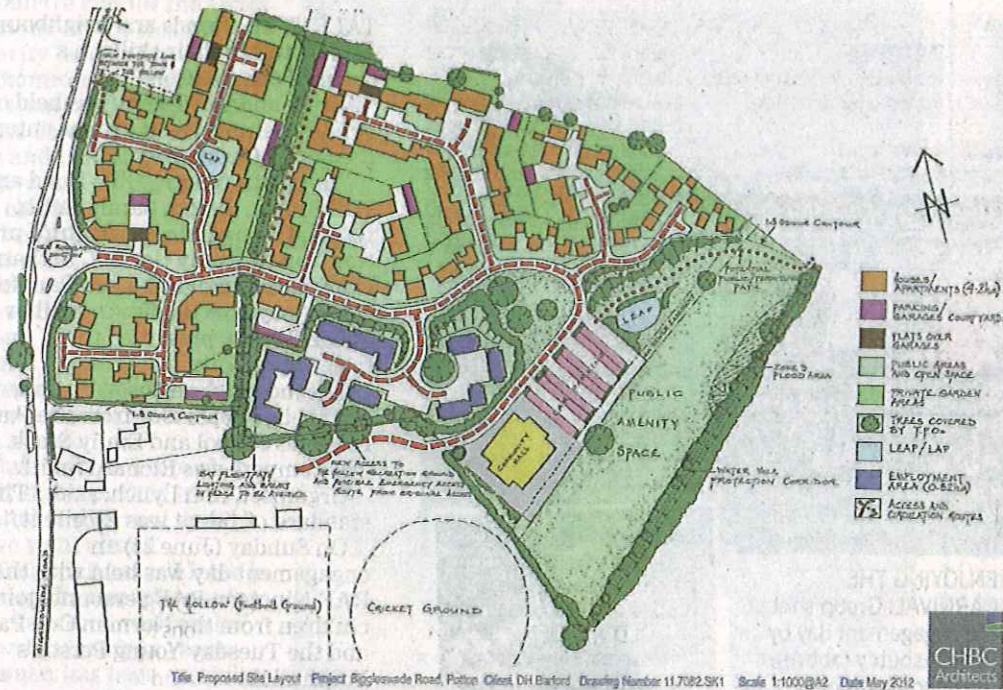


Discuss plans for new houses



This Proposed Site Layout Project Biggleswade Road, Potton Client DH Barford Drawing Number 11702/SK1 Scale 1:1000/A2 Date May 2012

POSSIBLE FUTURE: DH Barford and Co's proposed site layout

PIC: CHBC Architects

by **Ellen Frampton**

01767 224405 ellen.frampton@jpress.co.uk

Public consultation has been launched about development

HAVE your say about plans to build at least 150 homes and other facilities in a new development.

A public consultation has been launched so that you can give your opinion about DH Barford and Co's proposed residential and employment development on land east of Biggleswade Road in Potton.

In 2011 Central Beds Council allocated the land for a mixed use development providing a minimum of 150 homes, around one hectare of employment land, the controversial community hall and an extension to The Hollow sports ground.

Thirty five per cent of the

homes would be affordable.

Most of the properties will be two storeys high.

The employment land would be used for a range of flexible, small workplaces suitable for light industrial use.

A new roundabout would be installed on Biggleswade Road so that people could enter the estate more easily.

To protect the watervoles in Potton Brook there would be no works within five metres of the top of the bank.

The small population of lizards on the site would have to be caught and moved to a

new wildlife friendly habitat.

A leaflet is being sent to every house in Potton this week. You can view the full consultation draft development brief at www.barfords.co.uk/downloads/pottonbrief

It will also be available to view at the Central Beds Council offices in Chicksands, in Potton Library and in the Potton Town Council offices.

Staff from DH Barford and Co will be available to discuss the proposals between 2pm and 8pm on Tuesday, July 17 and from 10am to 2pm on Wednesday, July 18.

Email your comments to potton@barfords.co.uk or drop them off at the town council offices by Monday, July 30.

Once local views have been collected a planning application will be submitted.

It's a good place to Interact

A SUMMER fair will raise money for three charities.

The Interact Club at Biggleswade Academy Trust; Holmemead Middle School will be fundraising for the Great Ormond Street Hospital Charity, the Cystic Fibrosis Trust and Cancer Research at the event tomorrow (Saturday).

There will be a range of stalls and games at the fair, which will run from 10am until noon at the school.

Holmemead students run Interact with help from

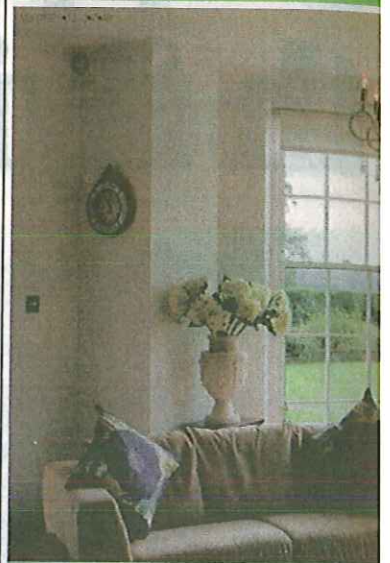
More campaign support

A PETITION against closing Biggleswade Hospital has now attracted more than 4,000 signatures.

Campaigners Ken Lynch and Doris Brunt have been collecting signatures in Biggleswade and Sandy.

They will be passing on the final petition to Bedfordshire PCT, Central Beds Council and health secretary and South Cambs MP Andrew Lansley.

The two will also be in Biggleswade Market Square tomorrow (Saturday) and on Friday, July 6 from 9.30am to 12.30pm. Anyone who is running a similar petition



FRESHEN UP
Security and peace of mind | Absorbent
Conservatories, Windows, Established



Unit 2, Shuttleworth Road, G

Call Peter Fossey
peter@prestigeglazing.com | www.prestigeglazing.com